

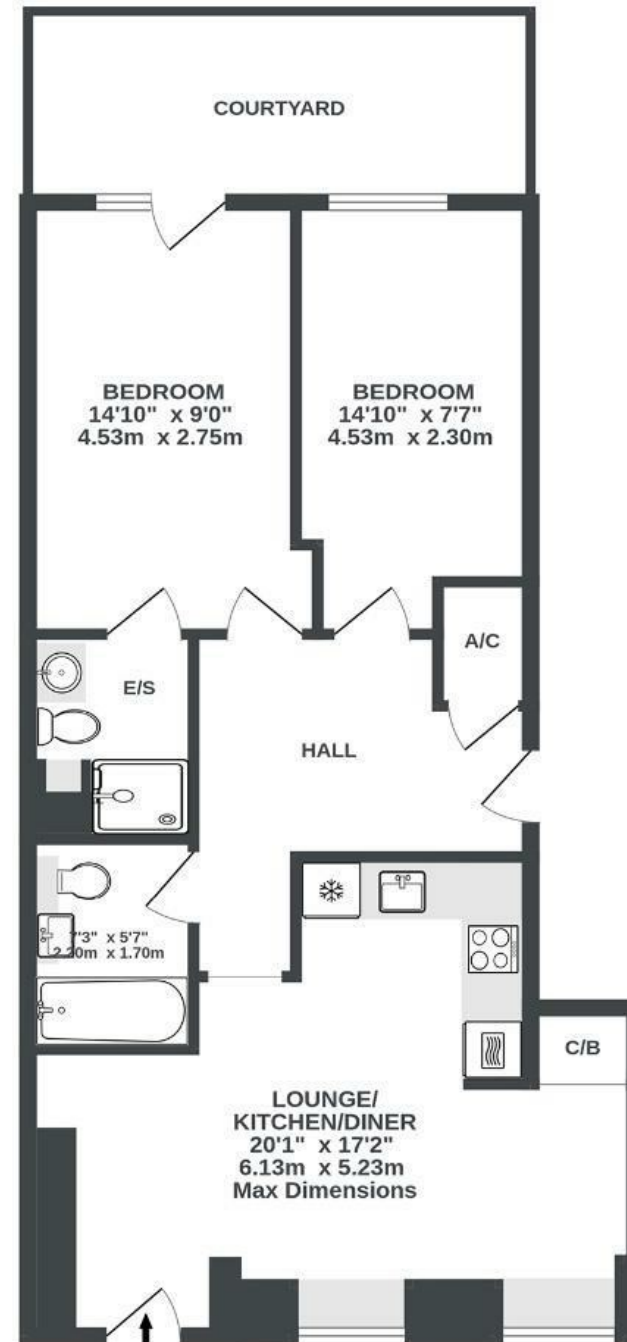
St Clements Court

ST PAULS

APPROXIMATE FLOOR AREA
62.1 SQM / 668 SQFT



GROUND FLOOR
668 sq.ft. (62.1 sq.m.) approx.



Illustrations are for reference purposes only, measurements are approximate, not to scale.

Boardwalk

St. Paul Street , BRISTOL



£270,000



2 Bedrooms



BS2 9HB



2 Bathrooms

"We've put a lot of time and effort turning this flat into a cosy home, there so many amenities on your doorstep such as Cabot Circus and Gloucester Road. The sense of community is great, we are part of a local dog walking group and have met lots of friends living in this area"

